



## TELEPHONE MAN OF AMERICA

Earning Your Business Every Step of the Way!

Specializing in Telecom Equipment of all Brands, Carrier Services, Technician Services, Maintenance Agreements & Purchasing Excess Telecom Equipment!

I will always do my best to match or beat any competitors bid!

| Local: 863-614-1900 | Toll Free: 866-770-4930 | Fax: 888-782-3072 |

Email: [telephoneman@telephonemanofamerica.com](mailto:telephoneman@telephonemanofamerica.com) |

URL: [www.TelephonemanOfAmerica.com](http://www.TelephonemanOfAmerica.com) | URL: [www.AvayaPartnerAcs.com](http://www.AvayaPartnerAcs.com) | URL: [www.SkypeMyPBX.com](http://www.SkypeMyPBX.com) |

URL: [www.shop.telephonemanofamerica.com](http://www.shop.telephonemanofamerica.com) |

ON-HOLD PLUS – Music-On-Hold for Use with PBX/Phone Systems

MP3 Digital On-Hold Audio Systems

# On-Hold Plus™ 7000 platinum series

For Use With PBX & Key Phone Systems

MP3 Digital On-Hold Audio Player  
With Multi-Track CD Autoload

the  
**ULTIMATE**  
in On-Hold Audio!



Truly the ULTIMATE in on-hold audio, the OHP-7000 can literally handle almost anything you throw at it. Whether you have your on-hold messages on an audio CD, SD memory card, or on your PC, this system can do it all. And, like all of our other systems, it's very easy to use!



## Features

- **Digital Flash Memory** - 128MB of on-board flash memory stores over 173 minutes (sampled at 98kbps) of awesome-sounding content. Additional Secure Digital card (not included) can add over 70 hours of content for continuous playback (1GB SD card).
- **Integrated CD Mechanism** - Quickly and easily record high quality audio from an Audio CD. CD media is easy and inexpensive to duplicate and distribute.
- **CD Autoload** - drop in a CD with a single track, close the lid, and the unit automatically records the content.
- **USB Connection** - Connect to your PC via USB to add new content or update firmware.
- **PC Connection...strictly optional** - Unit uses PC only to update content stored in flash memory. Updated content can optionally be added by copying an MP3 or WMA audio file to a Secure Digital (SD) card without the unit ever being connected to a PC or network.
- **Auto-start after Power Loss** - If power to the unit is lost, unit immediately returns to continuous playback with all settings without human intervention.
- **LCD Control Panel** - 6-line backlit LCD panel displays ID-3 tags with descriptive names of tracks for easy identification and selection. Display also shows a variety of important information so user can choose playback preferences and easily determine unit's operational status.
- **Built-In Monitor Speaker** - Allows user to monitor sound with the flip of a switch.
- **Wall-Mountable** - Unit can be mounted, played and recorded in a vertical position.
- **HoldTracks™ Audio CD** - Choose new, royalty-free music from a prerecorded audio CD featuring a variety of music styles.
- **MessageStudio™ Software** - Allows users to create new on-hold audio content, with voice, and music on their PC with a few mouse clicks. Then, just transfer the file directly to the unit's on-board memory, to an SD Card, or upload to a server for a network update.
- **Free personalization** - A free, professionally voiced, personalized on-hold production is provided to the customer automatically when a product is registered.

**IntelliTouch**  
www.intellitouch.com

© IntelliTouch Communications. All rights reserved. Made in China.  
On-Hold Plus, MessageStudio and HoldWare are registered trademarks of IntelliTouch.

**.MP3**  
audio



FC

CE

# On-Hold Plus™ 7000 platinum series

For Use With PBX & Key Phone Systems

## Specifications

### ■ Controls

Play/Stop  
Select (up/down)  
Menu  
Volume (up/down)  
Repeat Mode (one/all/shuffle)

### ■ Display

Playback Mode (play/stop)  
Repeat Mode (one/all/shuffle)  
Volume Setting  
Internal Memory (on-board)  
External Memory (SD Card)  
ID3 Tag (track name 1 artist)  
Running time of track and total track length  
Track number playing and total number of tracks stored

### ■ Jacks

USB (1.1)  
Audio Out (RCA)  
SD Card  
DC Power (12V)

### ■ Input

Integrated CD drive  
USB  
SD memory card slot

### ■ Output Power

8Ω - 4 volts peak-to-peak  
600Ω - 8 volts peak-to-peak

### ■ Power

12VDC @ 1000MA  
Source 110VAC, 60Hz UL/CSA power pack

### ■ Switches

Output impedance (8/600Ω)  
Speaker (on/off)

### ■ Memory Capacity

Internal - 128 MB  
External - Up to 1 GB (SD card)

### ■ Playback Capacity

Audio CD - 80 minutes  
Internal memory - up to 128 MB (173 minutes sampled at 98kbps)  
SD Card - up to 1 GB (4000 minutes at 32 kbps @ 32K rate)

### ■ Formats Supported

Via Integrated CD Drive:  
• Audio CD  
Via USB or SD Card:  
• MP3  
• WMA

### ■ Internal Conversion Sampling Rate

32kbps @ 32K

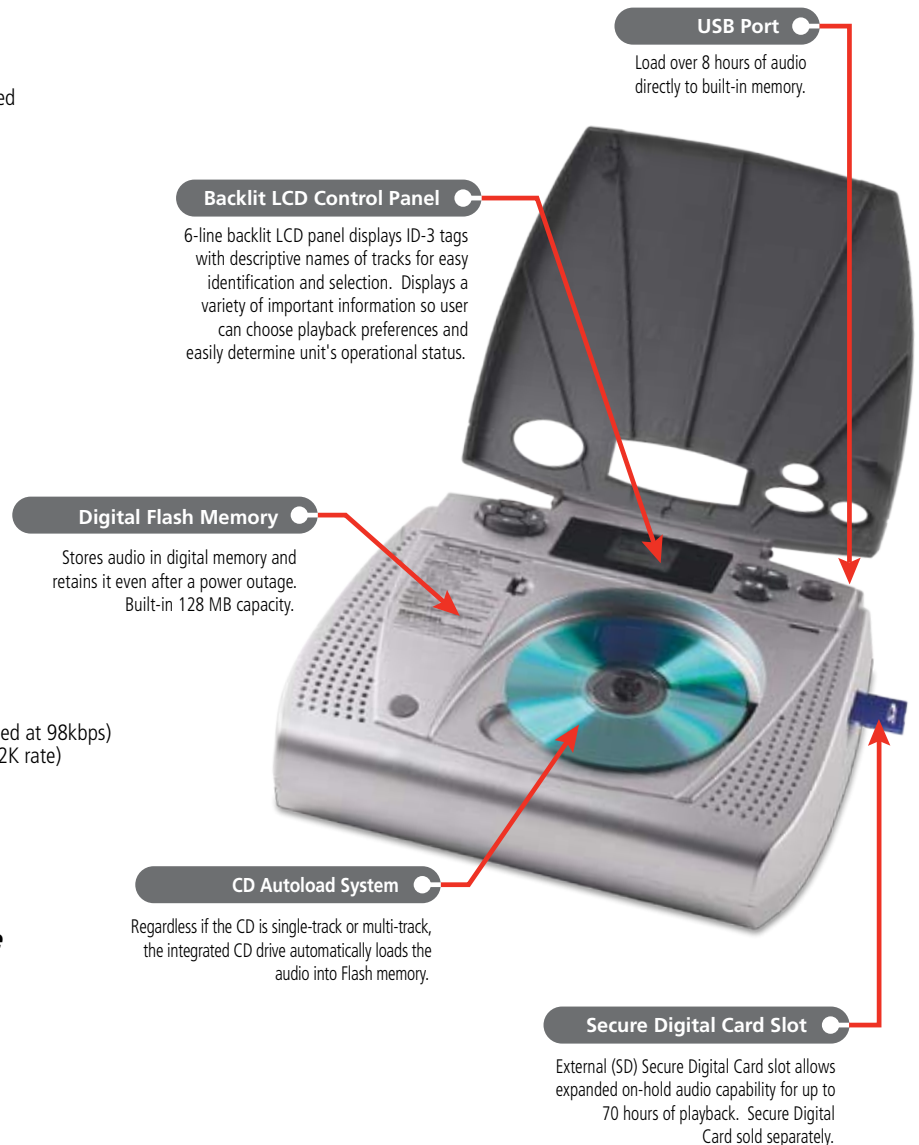
### ■ Physical

Size: 11 x 9" x 4.5" (LWD)  
Weight: 4.5 lbs.

### ■ Includes

Digital Player/Recorder  
MessageStudio™ Software  
HoldTracks™ Audio CD  
USB Cable  
Audio Connector Cable  
AC Power Adapter

## the ULTIMATE in On-Hold Audio!



**IntelliTouch**  
www.intellitouch.com

© IntelliTouch Communications. All rights reserved. Made in China.  
On-Hold Plus, MessageStudio and HoldWare are registered trademarks of IntelliTouch.

**.MP3**  
audio

